

WIFI Microscope

User Manual

For Models:

UMW10200X UMW10500X UMW10800X UMW101000X UMW101600X

Version 1.1

1. Part Names & Functions



1.1 Functions and instructions of the parts

Micro-USB port: when the device power is low, connect a 5v DC charger to charge the device, then the red indicator is on; When the red indicator goes off, the power become full. It is not recommended to use the equipment during the charging process (it will reduce the service life of the equipment battery).

Power switch/LED lights adjustment: when power is off, long-press the On-off button for 5 seconds to switch on the device, then the front LEDs light up. When the WIFI is connected successfully, the green indicator stops flashing. When the devices is working, short-press the button to adjust the brightness of the front LED lighting; long-press the button to switch off the device.

Status indicator: when starting to work, the front LEDs open light up; after 10 seconds, the WIFI function starts, and the green indicator flashes. When the WIFI is connected successfully, The green indicator is stably on. When charging the device, the red light is on. When the battery is fully charged, the red light goes off. When the battery is low, the device will automatically shut off, and all lights go out.

Digital zoom: click this button to enlarge the picture when the device is connected.

Photo/video: click this button to take a photo and save automatically when the device is connected. Press this button for 5 seconds to enter the video mode. After releasing the key, it stays in the recording mode. Then press this button again for 5 seconds to exit the video mode and automatically save the recording of video in this period. Photos and video are stored on IOS/Android devices and can be viewed with the relevant APP.

Focusing rollers: In case of connection, rotating the roller can adjust the focal length, focus on the shooting object until the clear image is seen.

1.2 specification:

Sensor: high-performance sensor

Main chip: 24Bit DSP

Magnification: 200X 500X 800X 1000X 1600X (according to models)

Photo/video: supported

Light source: white LEDs

Static resolution: 1280x720

Image resolution: 1280x720

Optical Focus: manual

Digital Focus: supported 5X

CD: contains Android APP, User Manual

Support systems: Android 4.0 and above, IOS 8.0 and above

Battery: 1400mah

Charge time: 6 hours

Working time: 4 hours

Power supply: Micro-USB (5V DC)

Product color: Silver Gray

Main dimensions: 160mm (length) 33mm (outer diameter)

Package weight: 200g

1.3 Safety warnings and cautions:

1. Do not disassemble the product, so as to avoid the electrostatic breakdown precision chip.
2. Do not use organic solvent to clean the product such as alcohol.
3. Don't touch the lens with your fingers to avoid scratches and smudges on the surface.
4. Avoid high temperature and high humidity and prevent short circuit of electronic devices. The product does not have waterproof function, please avoid rain and water.
5. The use of this product and storage temperature moderate range: 0°~ 40°C, relative humidity: 45% RH to 85% RH
6. If foreign matter or water/liquid are entered into products, please remove the USB cable. And send it to the maintenance center for maintenance. Do not handle it yourself.

1.4 Packing content:

WIFI Microscope 1

Micro-USB Power cable 1

User Manual 1

CD 1

2. How to use?

Use the WIFI Microscope on iOS/Android Device



2.1 Download APP

IOS: search UMW10 on App store, download and install it, or scan the following QR code.



Android: search UMW10 on Google Play, download and install it, or scan the following QR code.



or



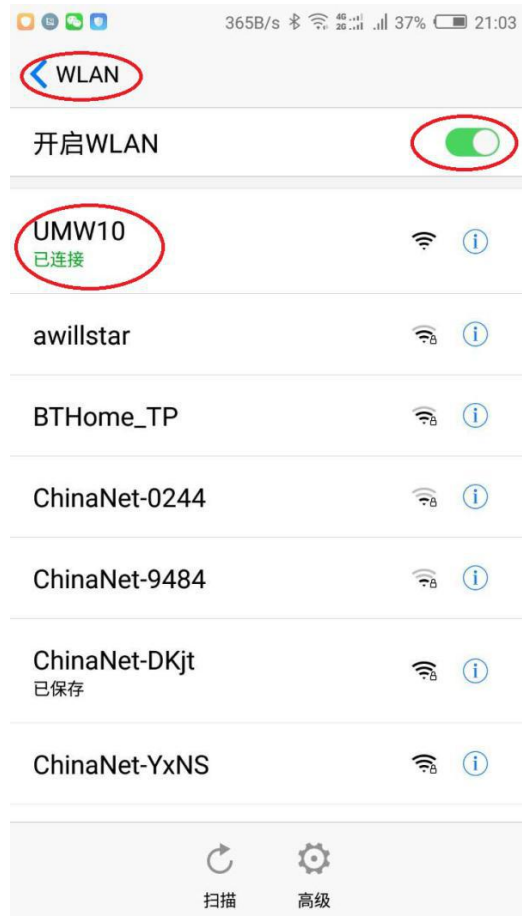
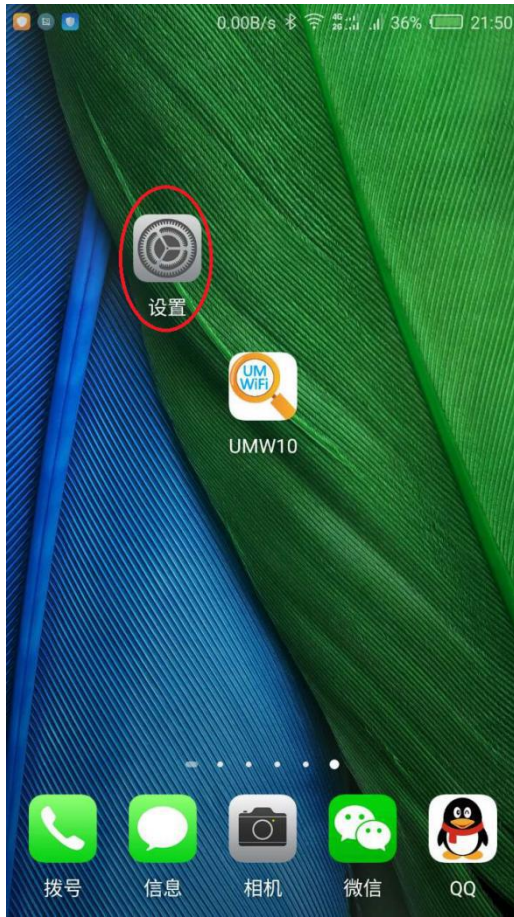
2.2 open equipment

Long-press the On-off button for 5 seconds to switch on the device, the front LEDs will light up. After 10 seconds, the WIFI function starts.

2.3 connect WIFI digital microscope to your IOS/Android device

Open the WIFI Settings on the IOS/Android devices, find a WIFI hotspot named "UMW10" (no encryption), click the link, and then return to the main interface of IOS/Android device after successfully connecting. Find the installed "UMW10" APP and click to run it.

Android

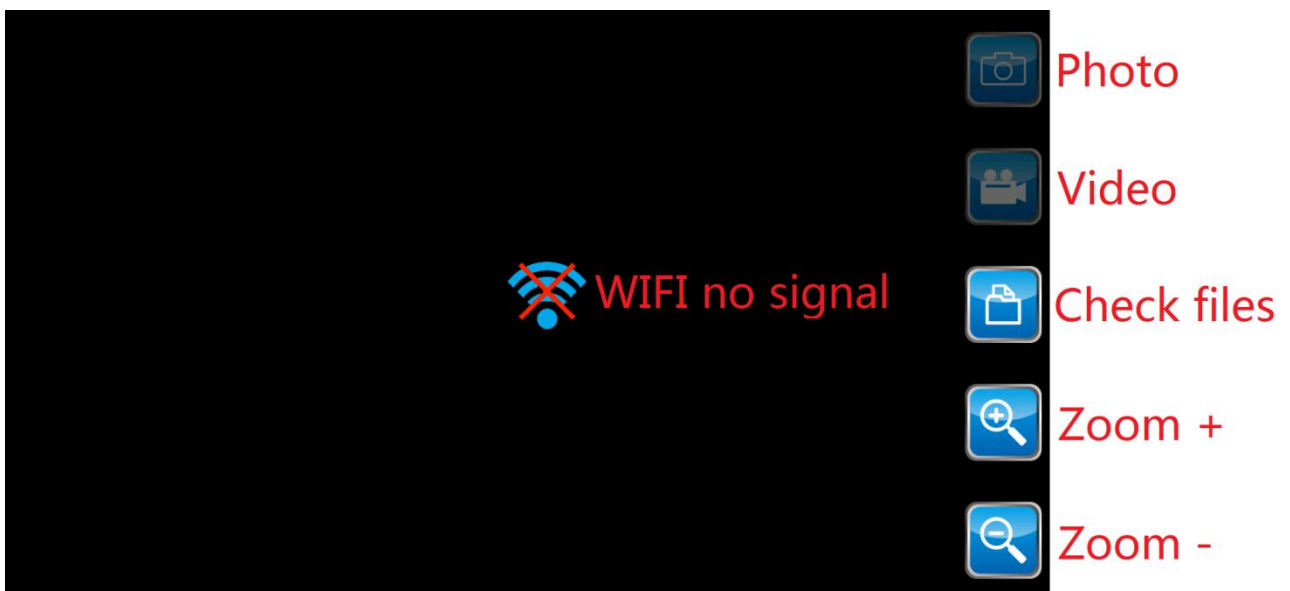
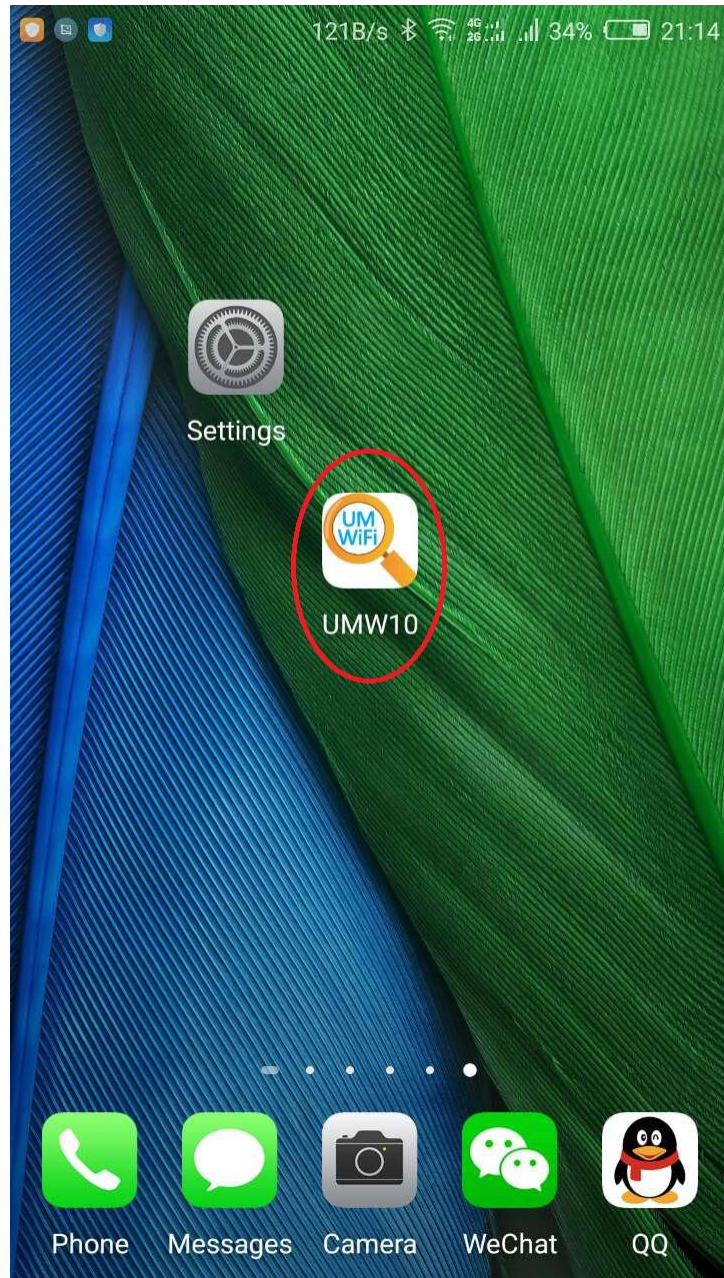


iOS

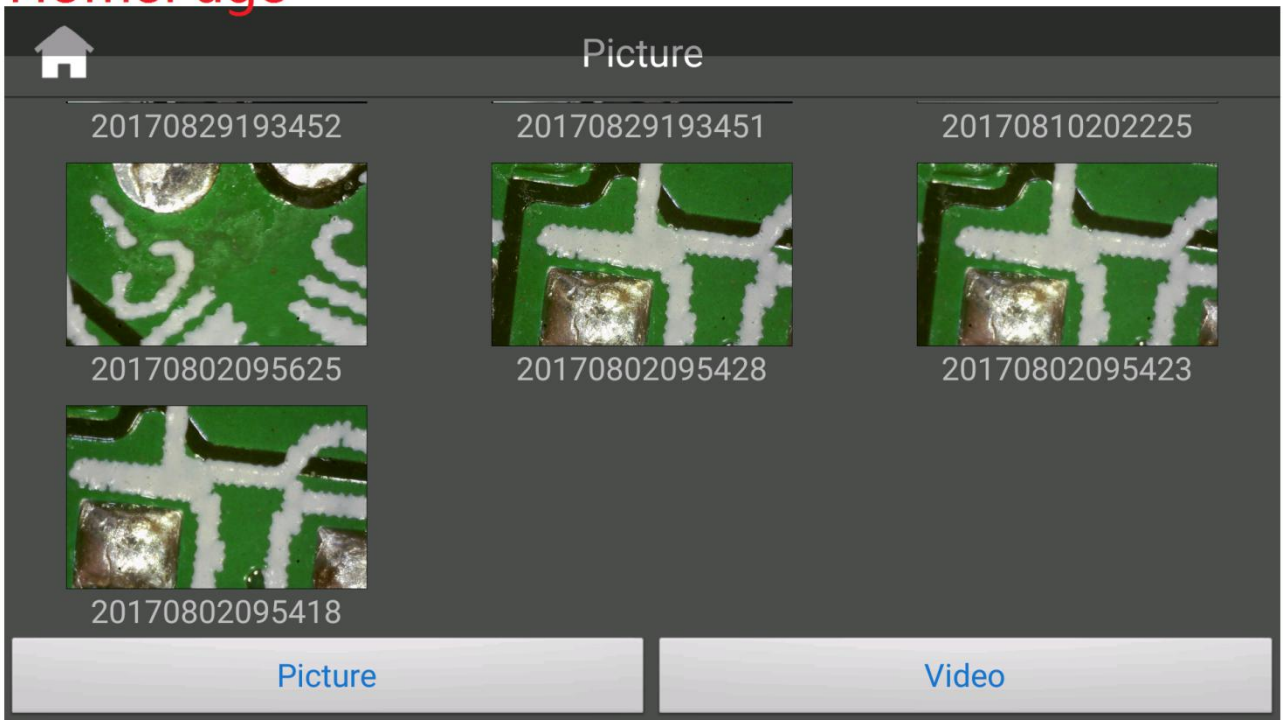


2.4 Use of APP

2.4.1 APP for Android.



HomePage

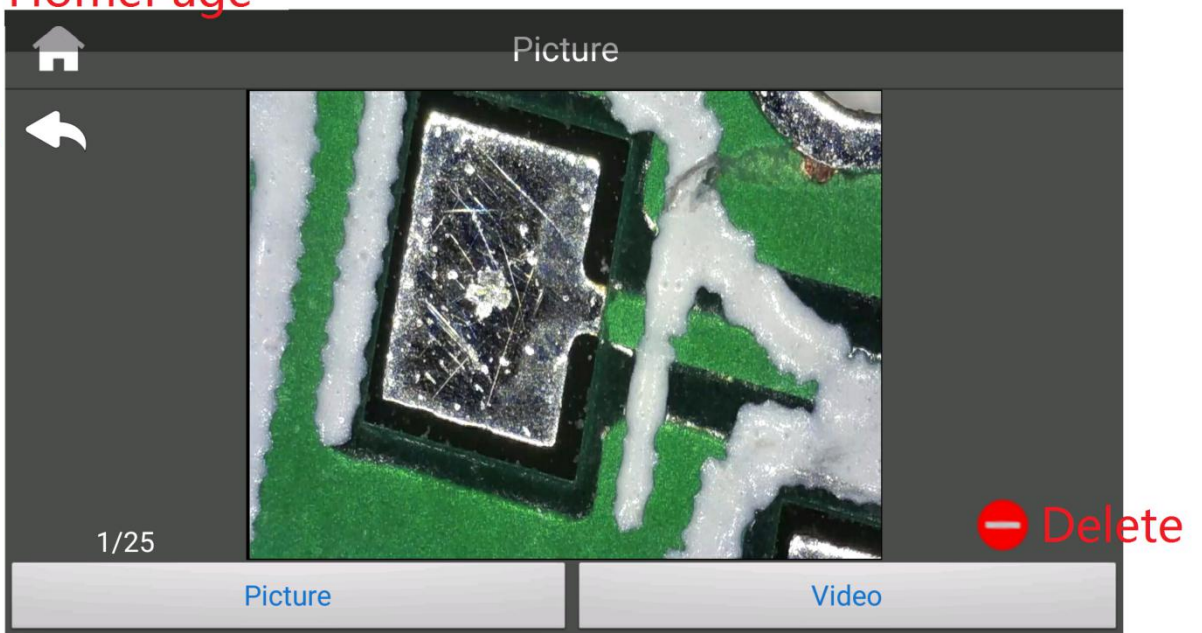


Check the pictures

Check the videos

HomePage

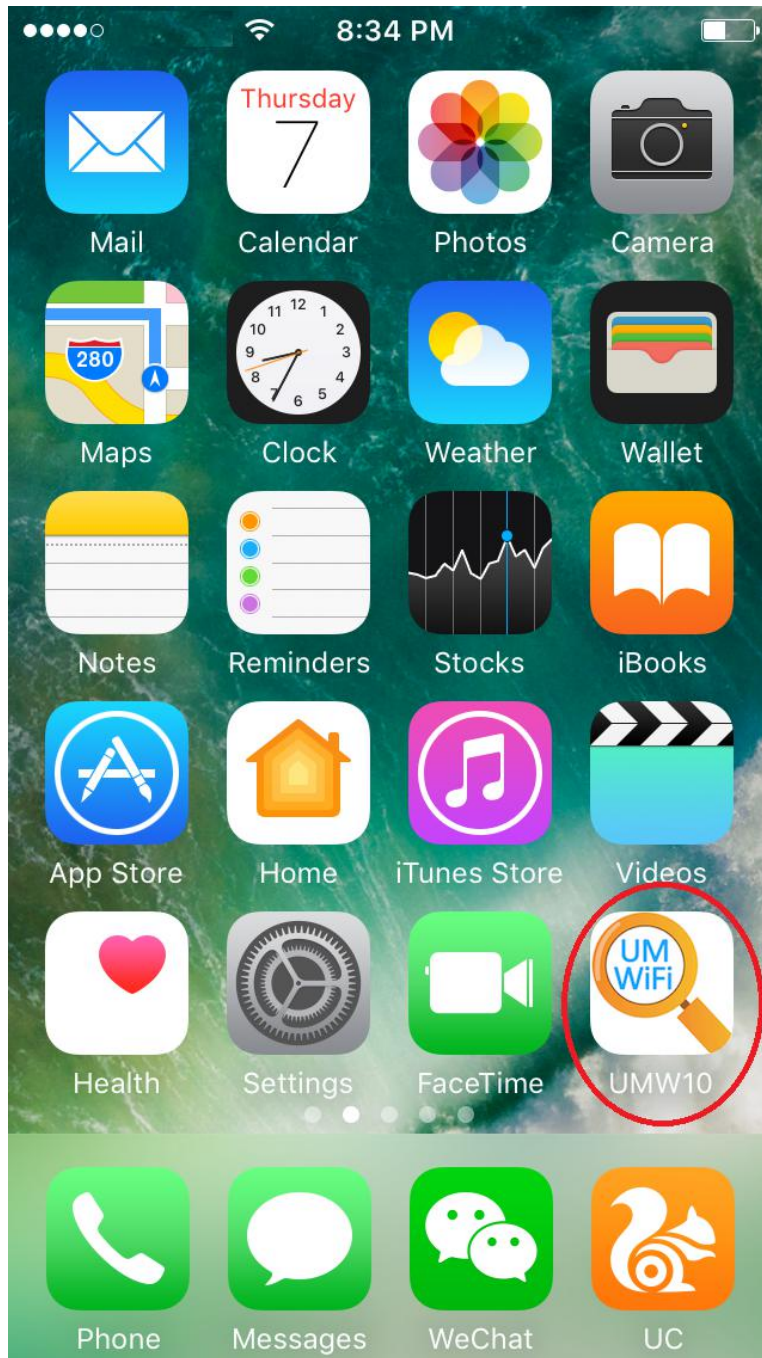
Return



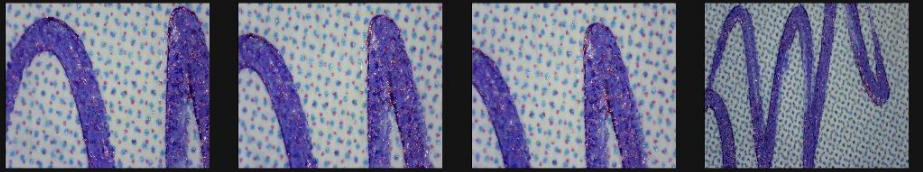
Check the pictures

Check the videos

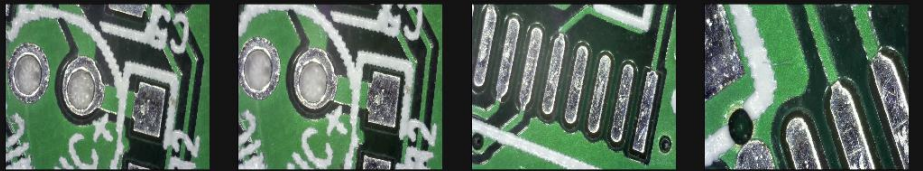
2.4.2 APP for IOS



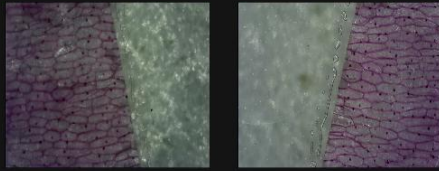
Return



Check Pictures



Check Videos



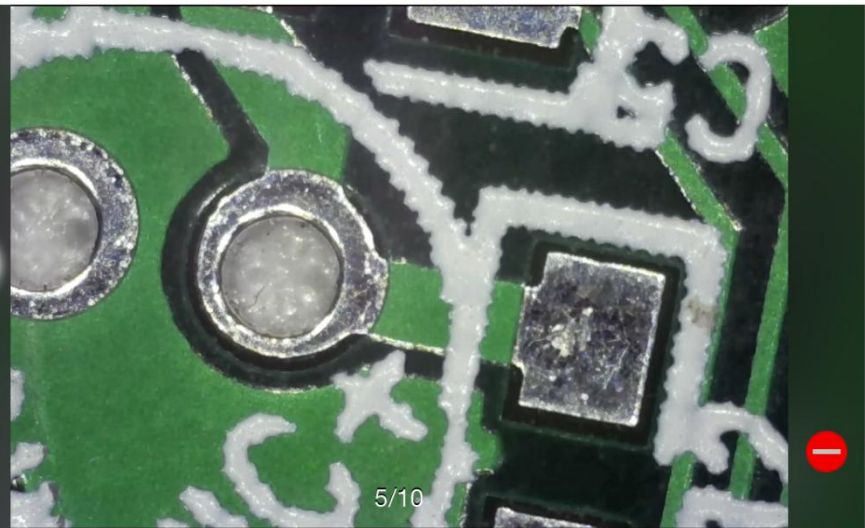
Return



Check Pictures



Check Videos



5/10



Delete

3 Application effects

