

BGD 760

Coating Fast Mixer

Operation Instruction



BIUGED LABORATORY INSTRUMENTS (GUANGZHOU) CO.,LTD

Add: RM.101,NO.3, Sicheng Rd., Gaotan Software Park, Tianhe District, Guangzhou.China 510663

Tel: 0086-20-32955999

Fax : 0086-20-32955818

E-mail: service@biuged.com

Website: www.biuged.com

About Us

Biuged Laboratory Instruments (Guangzhou) Co. Ltd. has been focusing on developing and innovating high-quality and high-precision instruments for 50 years. We are the biggest and most professional manufacturer of testing instruments for paint, coating, ink and printing field in China. All our products are in according with ISO, ASTM, EN standards etc and get CE Certification.

Originally founded in 1963, Biuged have grown to an internationally recognized company with many worldwide customers base which includes the worlds leading paint and coatings manufactures.

At the same time, Biuged has a young, motivate and vibrant team. Our R&D department continually investigates new product design ideas, in conjunction with the major standards committees. In order to supply up to date instrumentation for the Quality Control of coatings, we always apply the advanced contemporary techniques and experience to our new products. Our manufacturing department ensures that all our products are built to the highest quality, every instrument undergoing rigourous calibration and testing before it leaves our premises.

Moreover, Biuged has own independent Calibrate laboratory and more than 40 agents and offices all over the world. We are also the major member of Chinese Standardization Technology Committee of Paint and Pigment.

Produce the highest cost-effective products and offer the most professional service are Biuged mission. Satisfying our customers' needs are our ultimate wishes.

Factory

Address: No.15,Fuzhong Road, Zhongxin Town, Zengcheng district, Guangzhou City. China

Tel: 0086-20-32955999 (20 line)

Fax: 0086-20-32955818

E-mail: carish@biuged.com

Guangzhou office

Address: RM.101,NO.3, Sicheng Rd., Gaotang Software Park, Tianhe District, Guangzhou.China
510663

Tel: 0086-20-82169666

Fax: 0086-20-82340996

E-mail: carish@biuged.com

Shanghai office

Address: No. 1111, ZhongCai Industrial Park 1st floor, Zhufeng Road, Qingpu District, Shanghai

Tel: 0086-21-59240298

Fax: 0086-21-59242303

E-mail: xjx@biuged.com

1.0 Brief Introduction

BGD 760 series Coatings Fast Mixer which is known as “Quick Worker” is widely used to disperse coatings, dyestuff and ink, etc. quick & efficiently in the laboratory, do various formulation comparison test at the same time.

This machine has two models which is “Column Model” and “Floor Model”, each model has two specification “Carry Can” (no can provided) and “Carry Bottle”(8 bottles provided), customers can choose any type they need. “Stand Model” is more convenient for getting in and out of the material, “Floor model” is more stable. “Carry Can” can Carry various kinds of can (User should prepare container by himself. The max diameter of container is 180mm, the container height range is from 65mm to 180mm), “Carry Bottle” has a holder can Carry small glass bottles (each side Carries 4 small glass bottles, total is 8 small glass bottles). Each bottle capacity is about 195 ml.

2.0 Picture



3.0 Main Technical Parameters

Type	BGD 760/1	BGD 760/2	BGD 760/3	BGD 760/4
Motor	550W	550W	550W	550W
Crankshaft revolution	660rpm	660rpm	660rpm	660rpm
Main shaft reciprocating stroke	16mm	16mm	16mm	16mm
Main shaft swinging angle	30°	30°	30°	30°
Power	220V 50Hz	220V 50Hz	220V 50Hz	220V 50Hz
Overall Dimensions	800×520×1090 mm	800×520×1090 mm	800×520×530 mm	800×520×530 mm
Weight	77kg	81kg	77kg	81kg

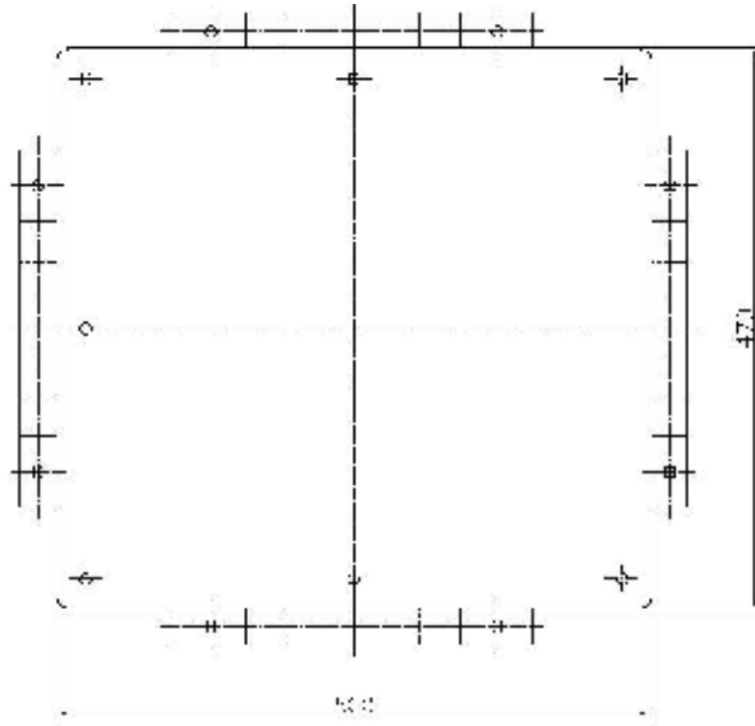
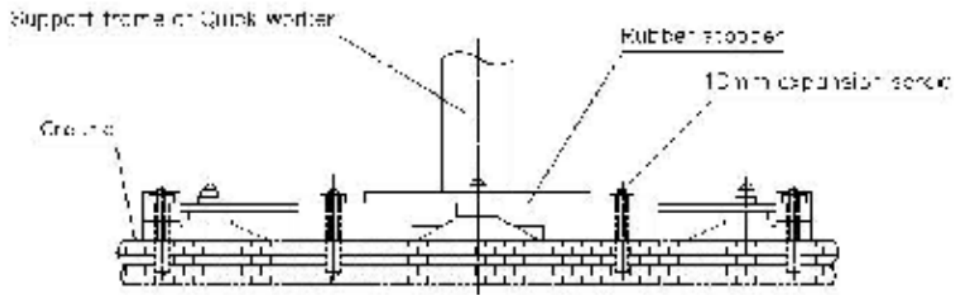
4.0 Installation

4.1 Installation for "Column model"

4.1.1 Install suction pad under the base plate of column support.

4.1.2 After column is in place, rubber stoppers are fixed around the base plate of column support (see below) with expansion screws ;

4.1.3 Install the main engine on the column support.



Installation drawing of Support frame of Quick Worker

4.2 Installation for "Floor Model"

Four foot springs are placed inside the spring seat hole of the base plate of main engine, ready-to-use.

5.0 Operation

5.1 Put materials and grinding media (mill bead) into can (or bottle) to be ground and dispersed. Mass ratio of material - bead refer to below table.

Grinding Media	Glass bead	Steel bead
Mass ratio of material - beads	1:2~4	1:3~4

5.2 Put the sealed can on the clamping device of machine, turn handle to tighten it, clamping force can not be over or can will be deformed (or bottle) and damaged clamping device .

5.3 Please don't use at one side. If it must be used at the one side, please put can (or bottle) within same volume water at the other side.

5.4 If using glass bottles on the “Carrying Can” model, in order to improve dispersion efficiency, clamp two small glass bottles symmetry. Also pay attention to the clamping device of two side balance.

5.5 Set the required grinding time then start.

5.6 After finishing grinding, please confirm the machine is completely stopped, then turn handle to open clamping device and take out the test cans (or bottles).

5.7 Work is completed, cut off the power and do cleaning work in time.

6.0 Four-Hole Gripper (Only “Carrying Bottle” model provided)

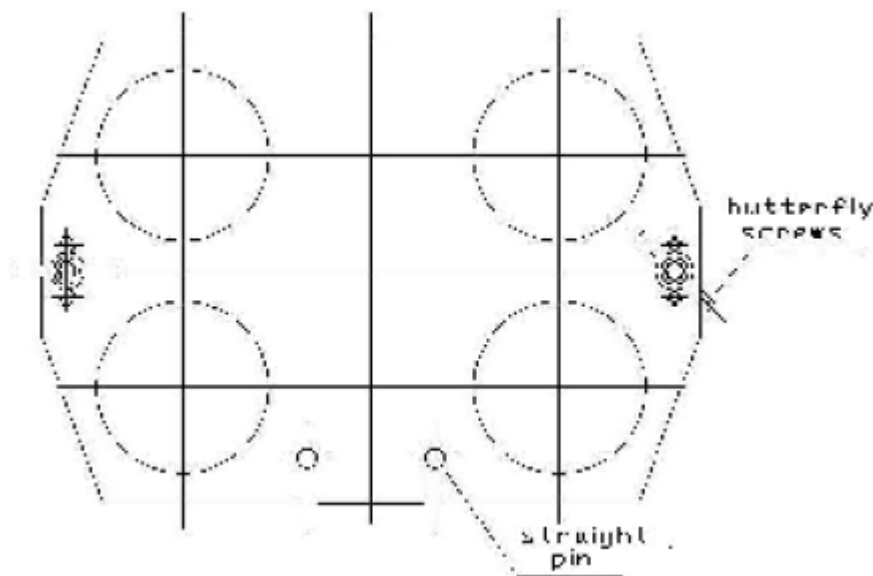
6.1 Loosen both sides of butterfly screws, separate the four-hole gripper.

6.2 Put small glass bottles into the gripper. (Test bottles must be the same size as we provide)

6.3 Cover the gripper and tighten both sides of butterfly screws.

6.4 Put the whole gripper into the clamping device of Quick Worker.

6.5 When installed, it must be paid attention to aiming two slots of four-hole gripper at straight pin of clamping device.



7.0 Notice

7.1 Please change lubricant of crankshaft after operating new machine for 100 hours, then just check and replenish lubricant periodically.

7.2 The maximum total grinding weight including grinding can (or bottle) can not exceed 5 kilograms so as to avoid damage of machine.

7.3 Please do cleaning & maintenance for guide-bar and screw of the grip apparatus.

7.4 For increase of service life of Quick Worker, when working time exceeds 90 minutes, please stop the machine for 10-15 minutes, it should be taken a rest for short time then starting again, it can avoid the machine over-heating.

7.5 Have a great heating produced when working, please try to put the machine in good ventilation conditions of the workplace.

7.6 Our company will continuously improve and develop products according to the needs of market and customers. Without prior notice if there is the latest version of the documentation.

8.0 Maintenance

Biuged Instruments offers free one-year warranty (calculated from the date of delivery) paid and provide lifelong maintenance and calibration.

8.1 The machine is warranted in respect of materials and workmanship for 12 months from the date of purchase. Any defective parts (excepts cutters) within the machine arising during the warranty period, shall be replaced free of charge subject to our inspection.

8.2 Any defective parts within the machine arising out of the warranty period: shall be replaced at client's expense.

8.3 Under the following conditions, we will not be responsible for the replacement during the warranty period:

- Without invoice or receipt.
- Damaged by wrong assembling or disassembling.
- Damaged by wrong or careless operation.
- Damaged by wrong operating under improper condition.
- Damaged by broken packing during transportation.

9.0 Others

For more information regarding this product, spares, accessories etc. or if you would like a catalogue listing our full range of products, please contact your local agent or Biuged Instruments at the address on the following page.

TIMER OPERATION

1. Install one piece “AA 1.5V” battery with correct positive/negative polarity into the battery holder.

2. Push button function

- (1) Clock Clock Indication
- (2) Set 8 Set of Programmable ON/OFF settings; Display 1^{ON}
1^{OFF}.....8^{ON};8^{OFF}
- (3) Hour Hour Set
- (4) Min Minute Set
- (5) RST/RCL Reset/Recall
- (6) ON/AUTO/OFF Lock on/On Auto/Auto Off/Lock Off Select

3. Clock Setting:

- Press “Clock” and “Hour” together till Correct date is shown
- Press “Clock” and “Min” together till Correct date is shown
- 8 Set of Programmable On/Off Settings; Display 1, 1

4. Timer Setting

- Press “SET” (Timer 1ST on mode)
- Press “HOUR” stop at requested hour
- Press “MIN” stop at requested minute
- Press “SET” (Timer 1ST off mode)
- Press “HOUR” stop at requested hour
- Press “MIN” stop at requested minute
- Repeat step (1) to step (6) , and you can set 2ST TO 8ST On and Off time
- You also can press “SET” for double checking
- Press “CLOCK” to resume present time

5. Plug Appliances to timer’s receptacles

6. Turn on appliance, time should at “ON AUTO” or “AUTO OFF”

7. Plug timer to AC outlet to complete setting.

8. Press “ON/AUTO/OFF” LCD points to “ON” to “ON AUTO” to “ATUO OFF ”to“ OFF” for manual operation. Stop at “ON AUTO” or “ATUO OFF” for automatic operation.

9. For cancel engagements, press “RST/RCL” then “--; --” is displayed on LCD to confirm cancel. May press “RST/RCL” again to resume initial setting.

